

PER D CTA 2500-6000
 OTED DF E TMA 2000-6000
 G

LED AIRSPACE WITH A BASE LEVEL OF ASS C AIRSPACE (WHERE ATS IS NOT

R 1.6. + + + + +
 E/E INVERURIE LANE
 VRP PHILPSTOUN

within sub. MATZ LARS 126-500
 STANDARD MATZ WITH TWO STUBS AND LARS

frequency to identify those participating fied by a LARS frequency annotation. The is available to all aircraft in unregulated ately 30NM of each participating ATS

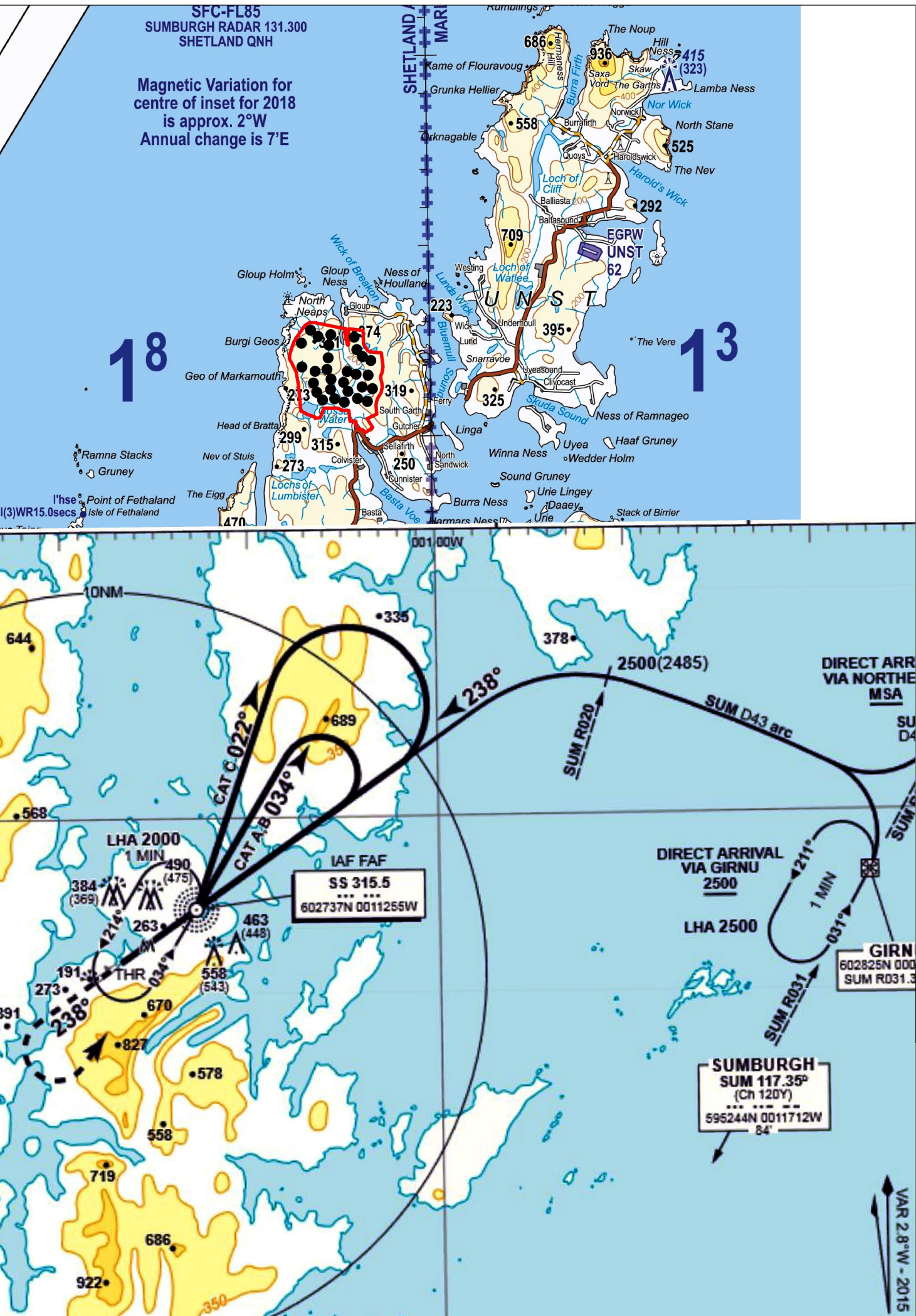
ate secondary surveillance radar equipment.

VOR DME with IP
 CAN
 B(L) VOR COMPASS ROSE Oriented on Magnetic North
 MES. For information on Navigational vised to consult Royal Air Force Flight
 ship. FIWR12.0secs
 1978 (1031)
 519 (394) 1726 (328) 1841 (381)
 group. cle above Mean Sea Level. cle above local Ground Level. ure gas. The flame, which to 600ft above the installation.
 GL ARE SHOWN ON BELOW 300ft AGL ANENT OFF-SHORE HT CATEGORY. F OBSTACLES IXTURE OF BEST COMPLETE.

SUMBURGH RADAR SECTOR SFC-FL85
 SUMBURGH RADAR 131.300
 SUMBURGH QNH

OTTISH FIR

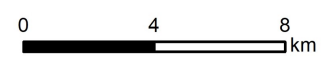
- See UK AIP ENR 5.1.
2. ABERDEEN ATSU OFFSHORE AREA OF RESPONSIBILITY. In the Aberdeen Sector the area of responsibility excludes both those portions of Y904 and Y905 and also the Aberdeen CTR/CTA that are contained within the area.
 3. ABERDEEN HELICOPTER TRACK STRUCTURE. INTENSE HELICOPTER OPERATIONS SFC-FL85. Helicopter Main Routes (HMR) are shown. Tracks are designated inbound, outbound or bi-directional (arrows indicate direction) and are identified by the track name. Detailed information regarding the track structure for Aberdeen airport RWYs 16 and 34 in the vicinity of Aberdeen is shown at UK AIP ENR 1.6. Reporting Points only are shown on the chart.
 4. METEOROLOGICAL BROADCASTS (VOLMET)
 LONDON VOLMET (MAIN) 135-375MHz.
 LONDON VOLMET (SOUTH) 128-600MHz.
 LONDON VOLMET (NORTH) 126-600MHz.
 SCOTTISH VOLMET 125-725 MHz.
 5. RESTRICTED AREA R612 (ARBROATH). Overflying permitted when inactive, contact RAF LEUCHARS LARS/VDF 126-500MHz or telephone: 01334 838722. See UK AIP ENR 5.1.
 6. AIRWAY P18. Available Tue-Fri 0530-0900 (0430-0800) and between Fri 1500 (1400) Fri or the day preceding a PH and Mon 1000 (0900) or the day following a PH. Also available May-Sep Mon-Thu 1900-0900. Subject to MoD requirements. See UK AIP ENR 3.1.
 7. KINLOSS/LOSSIEMOUTH CMATZ. If Lossiemouth is closed, a MATZ penetration service will be provided by Kinloss Tower on 122.100MHz (alternate frequency 119.350MHz). See UK AIP ENR 2.2.
 8. RESTRICTED AREA R504 applies only to Helicopters. See UK AIP ENR 5.1.



KEY

Yell Windfarm Site Boundary

Turbines



Scale 1:231,298 @ A3



Energy Isles Wind Farm
 EIA Report
 Figure 13:4

Scatsta NDB Chart Extract